



**United**<sup>®</sup>  
Orthopedic Corporation



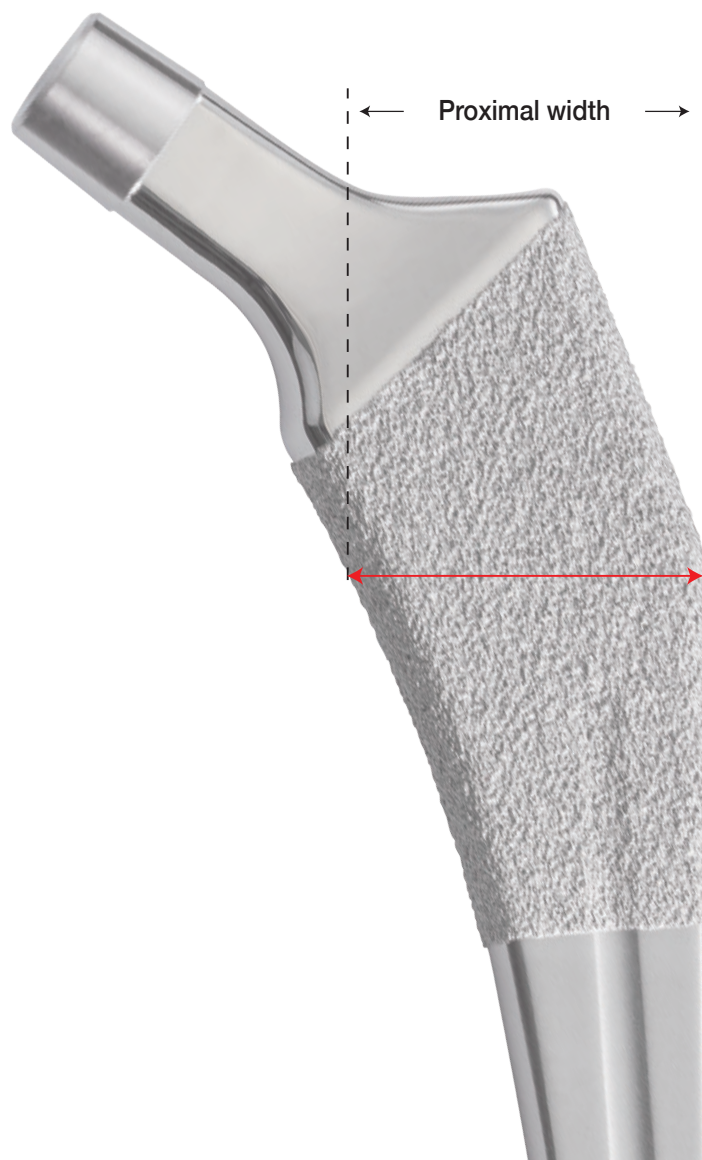
UTF<sup>™</sup> STEM  
reduced



# Refined Proximal Width

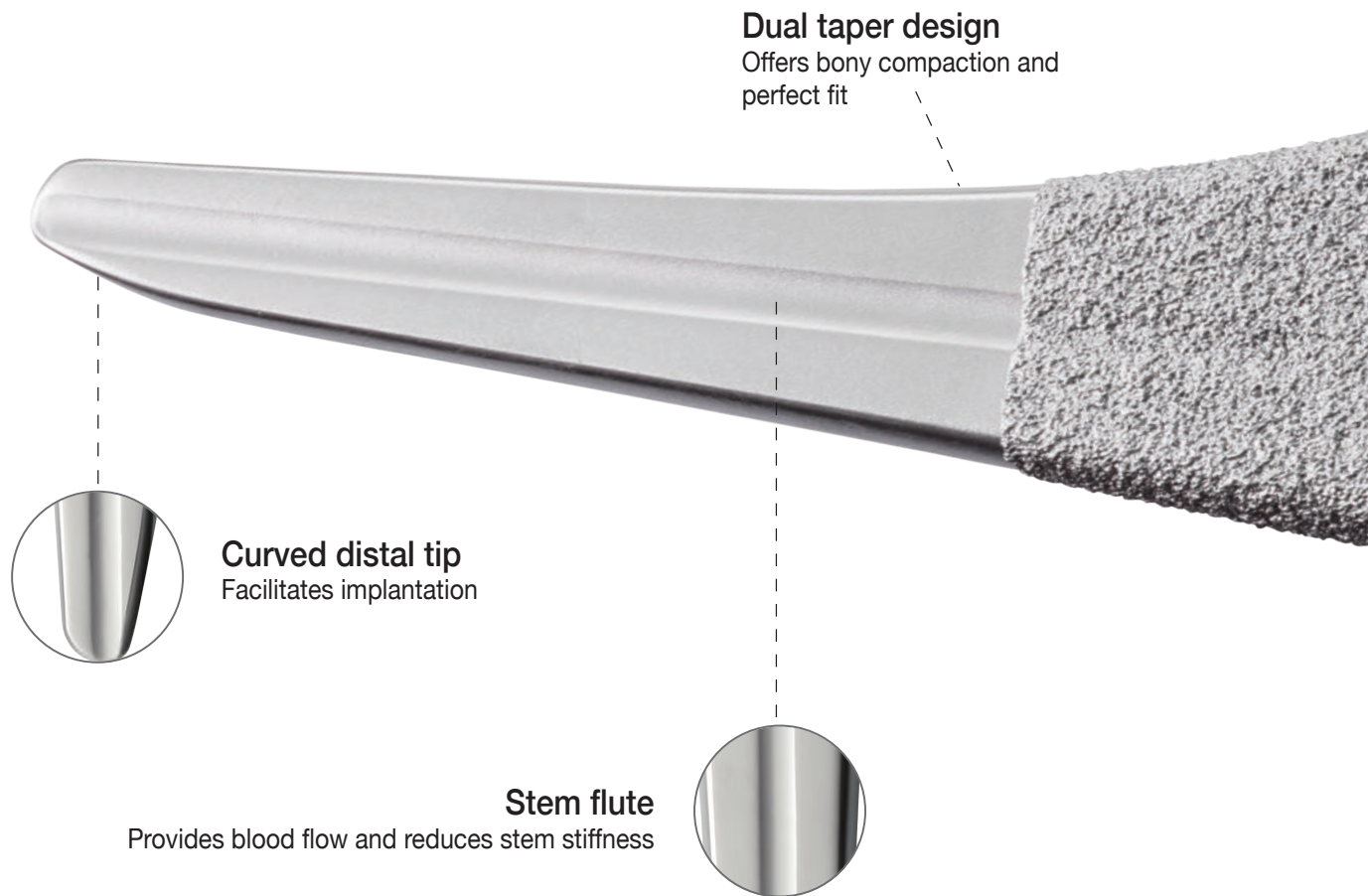
- Single mm proximal width increment in core sizes to gradually increase for a precise fit.
- Refined proximal width helps surgeons easily choose a proper proximal fit for each patient.

Stem Size	Proximal	Increment
#00	22.8	—
#0	23.6	0.8 mm
#1	25.0	1.4 mm
#2	26.5	1.5 mm
#3	27.5	1.0 mm
#4	28.5	1.0 mm
#5	29.5	1.0 mm
#6	30.5	1.0 mm
#7	31.5	1.0 mm
#8	32.5	1.0 mm
#9	34.0	1.5 mm
#10	35.5	1.5 mm
#11	37.5	2.0 mm
#12	39.5	2.0 mm
#13	41.5	2.0 mm
#14	43.5	2.0 mm



# The Answer for All Kinds of Femora

- Proximal fixation
- Simple surgical procedure
- Bone preservation







**Standard and high offsets**  
Restore joint biomechanics

**12/14 Morse taper**

**Optimized neck geometry**  
Increases range of motion and decreases cup-neck impingement

**Plasma spray coating**  
Improves biological fixation

**Insertion hole**  
Combined with quick connect holder for ease of use

# Instrumentations

The UTF stem system provides specially designed devices that are easy to use and time saving.

## Quick connect holder

Facilitates initial stem insertion



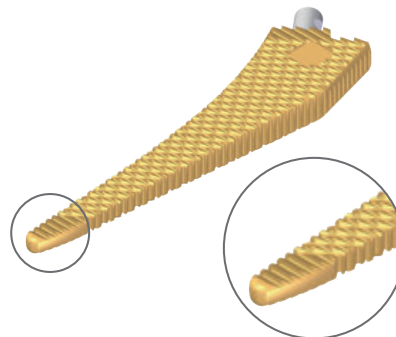
## Neck trial with a locking c-ring

Benefits simple assembly



## Broach

Smoothed tip directs correct broach alignment and prevents femoral fracture



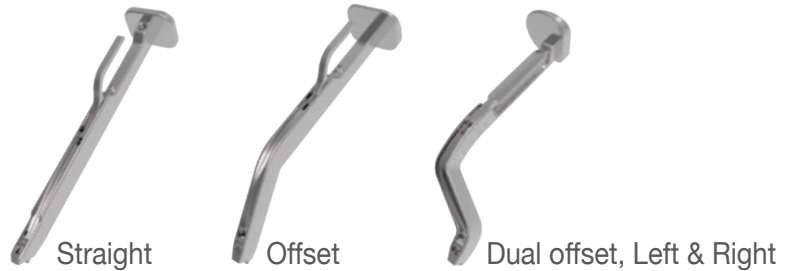
# Instrumentations

Uniquely designed instrumentations enable many surgical approaches for surgeon's needs.

## Broach handle

---

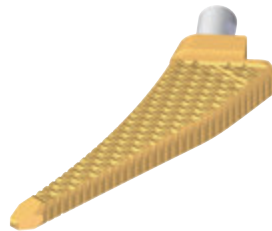
Multiple options for surgical needs



## Start broach

---

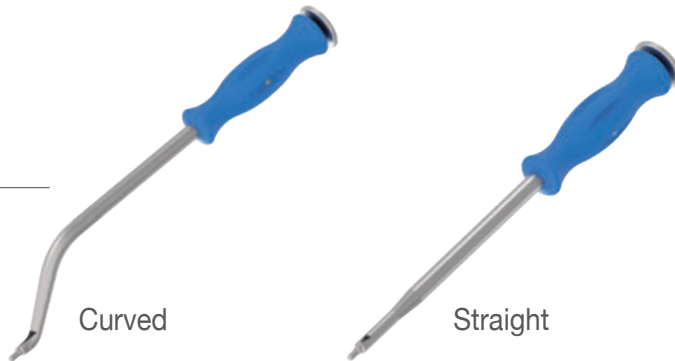
Helps initial canal opening



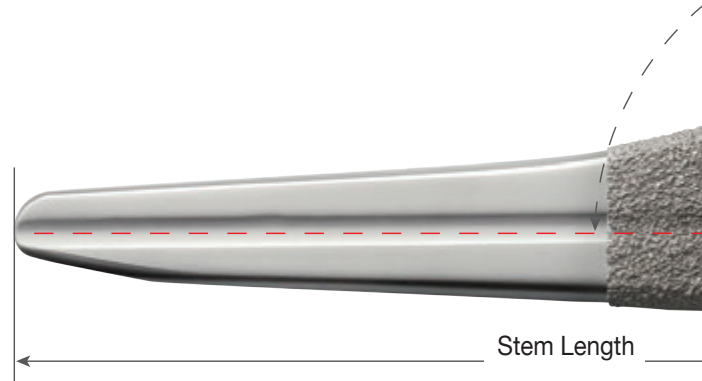
## Stem impactor

---

Adapts to different approach



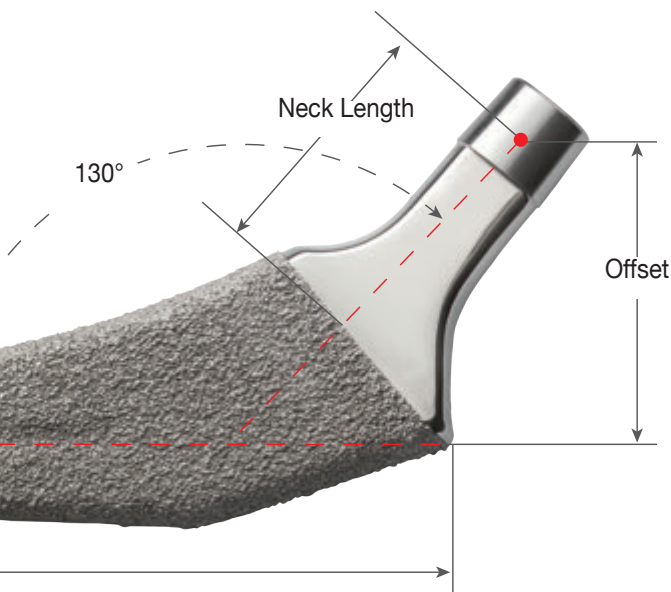
# Stem Specifications



Metal Head		22mm				26mm				26mm		28mm		32mm		36mm							
		+0mm		+3mm		+6mm		+9mm		-2mm		-3mm		+0mm		+2.5mm		+5mm		+7.5mm		+10mm	
Size	SL	OF	NL	OF	NL	OF	NL	OF	NL	OF	NL	OF	NL	OF	NL	OF	NL	OF	NL	OF	NL	OF	NL
Standard Offset, #00	114	32	28	34	31	37	34	39	37	30	26	30	25	32	28	34	30.5	36	33	38	35.5	40	38
Standard Offset, #0	120	32	28	34	31	37	34	39	37	30	26	30	25	32	28	34	30.5	36	33	38	35.5	40	38
Standard Offset, #1	125	32	28	34	31	37	34	39	37	30	26	30	25	32	28	34	30.5	36	33	38	35.5	40	38
Standard Offset, #2	128	33	29	35	32	38	35	40	38	31	27	31	26	33	29	35	31.5	37	34	39	36.5	41	39
Standard Offset, #3	131	34	30	36	33	39	36	41	39	32	28	32	27	34	30	36	32.5	38	35	40	37.5	42	40
Standard Offset, #4	134	35	31	37	34	40	37	42	40	33	29	33	28	35	31	37	33.5	39	36	41	38.5	43	41
Standard Offset, #5	137	36	32	38	35	41	38	43	41	34	30	34	29	36	32	38	34.5	40	37	42	39.5	44	42
Standard Offset, #6	140	37	33	39	36	42	39	44	42	35	31	35	30	37	33	39	35.5	41	38	43	40.5	45	43
Standard Offset, #7	142	38	34	40	37	43	40	45	43	36	32	36	31	38	34	40	36.5	42	39	44	41.5	46	44
Standard Offset, #8	144	39	35	41	38	44	41	46	44	37	33	37	32	39	35	41	37.5	43	40	45	42.5	47	45
Standard Offset, #9	146	39	35	41	38	44	41	46	44	37	33	37	32	39	35	41	37.5	43	40	45	42.5	47	45
Standard Offset, #10	149	41	37	43	40	46	43	48	46	39	35	39	34	41	37	43	39.5	45	42	47	44.5	49	47
Standard Offset, #11	152	42	38	44	41	47	44	49	47	40	36	40	35	42	38	44	40.5	46	43	48	45.5	50	48
Standard Offset, #12	155	43	39	45	42	48	45	50	48	41	37	41	36	43	39	45	41.5	47	44	49	46.5	51	49
Standard Offset, #13	158	44	39.5	46	42.5	49	45.5	51	48.5	42	38	42	36.5	44	39.5	46	42	48	44.5	50	47	52	49.5
Standard Offset, #14	161	45	40	47	43	50	46	52	49	43	38	43	37	45	40	47	42.5	49	45	51	47.5	53	50
High Offset, #0	120	38	32	40	35	43	38	45	41	36	30	36	29	38	32	40	34.5	42	37	44	39.5	46	42
High Offset, #1	125	38	32	40	35	43	38	45	41	36	30	36	29	38	32	40	34.5	42	37	44	39.5	46	42
High Offset, #2	128	39	33	41	36	44	39	46	42	37	31	37	30	39	33	41	35.5	43	38	45	40.5	47	43
High Offset, #3	131	40	34	42	37	45	40	47	43	38	32	38	31	40	34	42	36.5	44	39	46	41.5	48	44
High Offset, #4	134	41	35	43	38	46	41	48	44	39	33	39	32	41	35	43	37.5	45	40	47	42.5	49	45
High Offset, #5	137	43	37	45	40	48	43	50	46	41	35	41	34	43	37	45	39.5	47	42	49	44.5	51	47
High Offset, #6	140	44	38	46	41	49	44	51	47	42	36	42	35	44	38	46	40.5	48	43	50	45.5	52	48
High Offset, #7	142	45	39	47	42	50	45	52	48	43	37	43	36	45	39	47	41.5	49	44	51	46.5	53	49
High Offset, #8	144	46	40	48	43	51	46	53	49	44	38	44	37	46	40	48	42.5	50	45	52	47.5	54	50
High Offset, #9	146	47	40	49	43	52	46	54	49	45	38	45	37	47	40	49	42.5	51	45	53	47.5	55	50
High Offset, #10	149	49	42	51	45	54	48	56	51	47	40	47	39	49	42	51	44.5	53	47	55	49.5	57	52
High Offset, #11	152	50	43	52	46	55	49	57	52	48	41	48	40	50	43	52	45.5	54	48	56	50.5	58	53
High Offset, #12	155	51	44	53	47	56	50	58	53	49	42	49	41	51	44	53	46.5	55	49	57	51.5	59	54
High Offset, #13	158	52	45	54	48	57	51	59	54	50	43	50	42	52	45	54	47.5	56	50	58	52.5	60	55
High Offset, #14	161	53	45.5	55	48.5	58	51.5	60	54.5	51	43.5	51	42.5	53	45.5	55	48	57	50.5	59	53	61	55.5

\* The actual spherical diameter of a 22-mm metal head is 22.2 mm.







\*OF=Offset \*NL=Neck Length \*SL=Stem Length

BIOLOX® delta Ceramic Head		28mm						32mm		36mm		40mm		32mm		36mm 40mm	
		-2.5mm		+1mm		+4mm		-3mm		+1mm		+5mm		+8mm		+9mm	
Size	SL	OF	NL	OF	NL	OF	NL	OF	NL	OF	NL	OF	NL	OF	NL	OF	NL
Standard Offset, #00	114	30.5	25.5	33	29	35	32	30	25	33	29	36	33	38	36	39	37
Standard Offset, #0	120	30.5	25.5	33	29	35	32	30	25	33	29	36	33	38	36	39	37
Standard Offset, #1	125	30.5	25.5	33	29	35	32	30	25	33	29	36	33	38	36	39	37
Standard Offset, #2	128	31.5	26.5	34	30	36	33	31	26	34	30	37	34	39	37	40	38
Standard Offset, #3	131	32.5	27.5	35	31	37	34	32	27	35	31	38	35	40	38	41	39
Standard Offset, #4	134	33.5	28.5	36	32	38	35	33	28	36	32	39	36	41	39	42	40
Standard Offset, #5	137	34.5	29.5	37	33	39	36	34	29	37	33	40	37	42	40	43	41
Standard Offset, #6	140	35.5	30.5	38	34	40	37	35	30	38	34	41	38	43	41	44	42
Standard Offset, #7	142	36.5	31.5	39	35	41	38	36	31	39	35	42	39	44	42	45	43
Standard Offset, #8	144	37.5	32.5	40	36	42	39	37	32	40	36	43	40	45	43	46	44
Standard Offset, #9	146	37.5	32.5	40	36	42	39	37	32	40	36	43	40	45	43	46	44
Standard Offset, #10	149	39.5	34.5	42	38	44	41	39	34	42	38	45	42	47	45	48	46
Standard Offset, #11	152	40.5	35.5	43	39	45	42	40	35	43	39	46	43	48	46	49	47
Standard Offset, #12	155	41.5	36.5	44	40	46	43	41	36	44	40	47	44	49	47	50	48
Standard Offset, #13	158	42.5	37	45	40.5	47	43.5	42	36.5	45	40.5	48	44.5	50	47.5	51	48.5
Standard Offset, #14	161	43.5	37.5	46	41	48	44	43	37	46	41	49	45	51	48	52	49
High Offset, #0	120	36.5	29.5	39	33	41	36	36	29	39	33	42	37	44	40	45	41
High Offset, #1	125	36.5	29.5	39	33	41	36	36	29	39	33	42	37	44	40	45	41
High Offset, #2	128	37.5	30.5	40	34	42	37	37	30	40	34	43	38	45	41	46	42
High Offset, #3	131	38.5	31.5	41	35	43	38	38	31	41	35	44	39	46	42	47	43
High Offset, #4	134	39.5	32.5	42	36	44	39	39	32	42	36	45	40	47	43	48	44
High Offset, #5	137	41.5	34.5	44	38	46	41	41	34	44	38	47	42	49	45	50	46
High Offset, #6	140	42.5	35.5	45	39	47	42	42	35	45	39	48	43	50	46	51	47
High Offset, #7	142	43.5	36.5	46	40	48	43	43	36	46	40	49	44	51	47	52	48
High Offset, #8	144	44.5	37.5	47	41	49	44	44	37	47	41	50	45	52	48	53	49
High Offset, #9	146	45.5	37.5	48	41	50	44	45	37	48	41	51	45	53	48	54	49
High Offset, #10	149	47.5	39.5	50	43	52	46	47	39	50	43	53	47	55	50	56	51
High Offset, #11	152	48.5	40.5	51	44	53	47	48	40	51	44	54	48	56	51	57	52
High Offset, #12	155	49.5	41.5	52	45	54	48	49	41	52	45	55	49	57	52	58	53
High Offset, #13	158	50.5	42.5	53	46	55	49	50	42	53	46	56	50	58	53	59	54
High Offset, #14	161	51.5	43	54	46.5	56	49.5	51	42.5	54	46.5	57	50.5	59	53.5	60	54.5

\*BIOLOX® delta is the registry trademark of Ceramtec AG.

# Order Information

Standard Offset	Catalog Number	Description	High Offset	Catalog Number	Description
	1106-3099	#00		1106-3200	#0
	1106-3000	#0		1106-3201	#1
	1106-3001	#1		1106-3202	#2
	1106-3002	#2		1106-3203	#3
	1106-3003	#3		1106-3204	#4
	1106-3004	#4		1106-3205	#5
	1106-3005	#5		1106-3206	#6
	1106-3006	#6		1106-3207	#7
	1106-3007	#7		1106-3208	#8
	1106-3008	#8		1106-3209	#9
	1106-3009	#9		1106-3210	#10
	1106-3010	#10		1106-3211	#11
	1106-3011	#11		1106-3212	#12
	1106-3012	#12		1106-3213	#13
1106-3013	#13	1106-3214	#14		
1106-3014	#14				



Each Step **We Care**



## Contact Us

### ■ Taiwan

#### United Orthopedic Corporation

12F, No. 80, Sec. 1, Chenggong Rd, Yonghe Dist.,  
New Taipei City 23452, Taiwan

Tel: +886 2 2929 4567 Fax: +886 2 2922 4567

### ■ Europe

#### UOC (Suisse) SA

Avenue Général Guisan 60A, 1009 Pully, Switzerland.  
Tel: +41 (0) 21 634 70 70 Fax: +41 (0) 21 634 70 76

#### UOC (France)

21, Rue de la Ravinelle, 54000 Nancy, France.  
Tel: +33 (0) 3 83 23 39 72 Fax: +33 (0) 3 83 23 39 10

### ■ China

#### United Medical Instrument Co. Ltd.

Room 402, Building 7, No.697, Ling ShiRoad,  
Shanghai, China, 200072

Tel: +86 21 3661 8055 Fax: +86 21 6628 3031

### ■ EU Representative

#### mdi Europa GmbH

Langenhagener Strasse 71,  
30855 Langenhagen, Germany

Tel: +49 511 3908 9530 Fax: +49 511 3908 9539

### ■ Japan

#### United Biomech Japan Inc.

Ginyo Bldg 4th floor, 2-9-40 Kitasaiwai, Nishi-Ku  
Yokohama City, Kanagawa, 220-0004, Japan

Tel: +81 45 620 0741 Fax: +81 45 620 0742

### ■ USA

#### UOC USA Inc.

20 Fairbanks, Suite 173, Irvine, CA 92618

Tel: +1 949-328-3366 Fax: +1 949-328-3367